



**City of Cherryville
North Carolina**

Zoning Legend

- B-1 Central Business
- B-2 Neighborhood Business
- B-3 General Business
- GMC General Manufacturing
- R-12 Single Family Residential
- R-15 Single Family Residential
- R-40 Rural Residential
- R-9 Single and Two Family
- RMF Residential Multi Family
- RO Residential Office
- CZ/R-12 Conditional
- CZ/R-9 Conditional

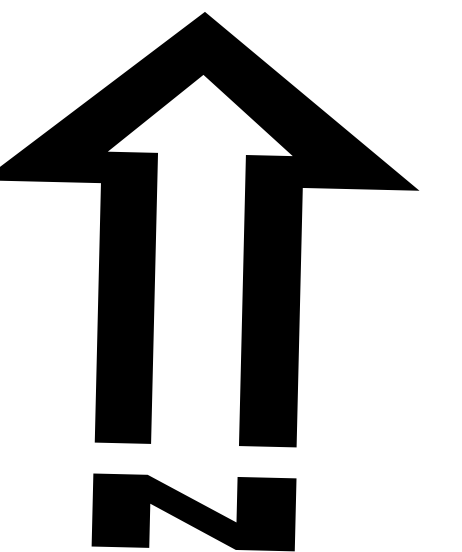
Feature Legend

- Schools
- Municipal Boundary
- ETJ Boundary
- Railroad
- Creeks and Streams
- Property Parcels
- Rivers and Ponds

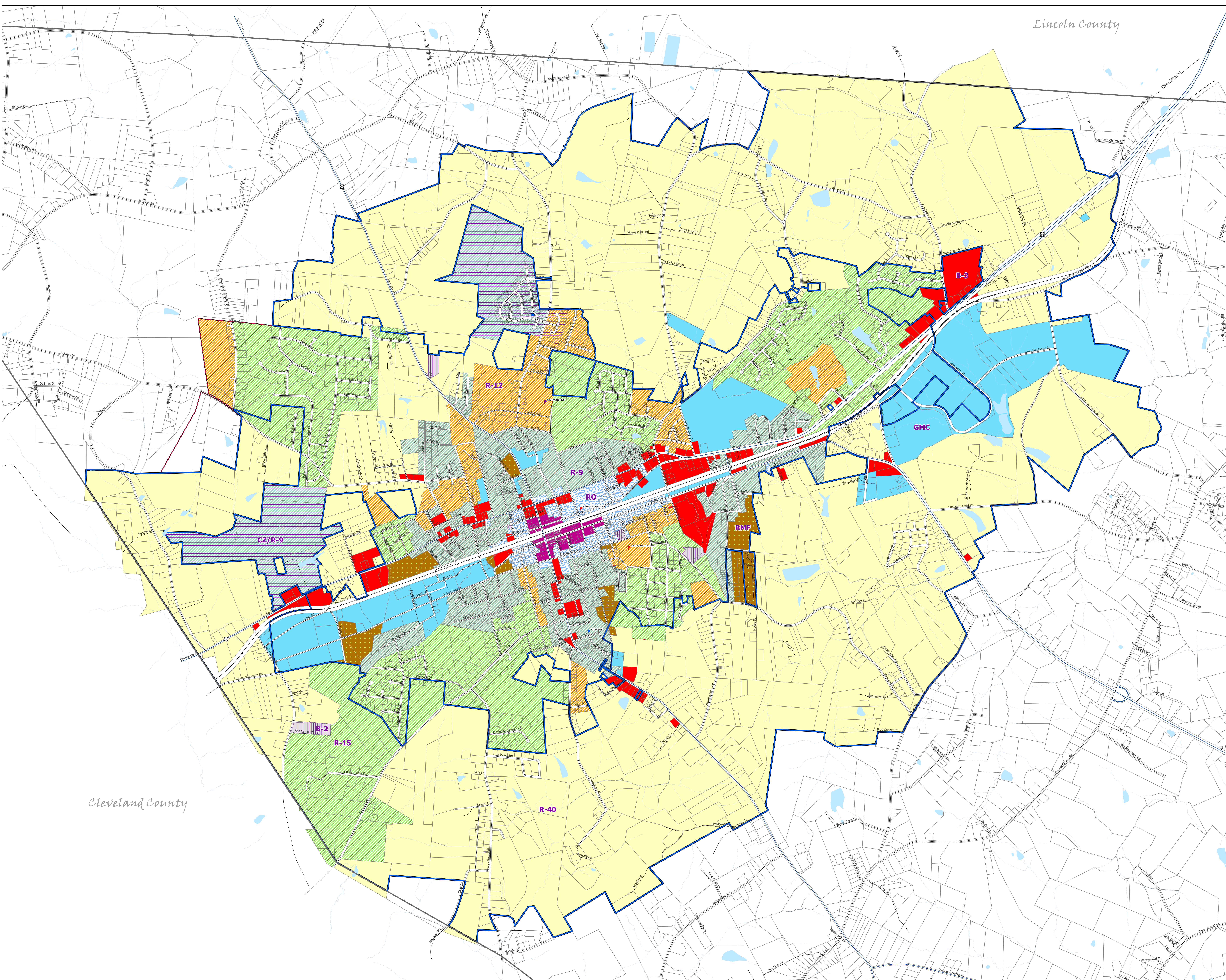
This map was compiled by the Gaston County Building and Development Services for the sole purpose of depicting the City of Cherryville.

Although strict accuracy standards have been employed in the compilation of this map, Gaston County does not make or imply any warranties or assume any responsibility for the information presented on this map.

Print Date: 12/11/2025



0 255 510 1,020 1,530 2,040 Feet



Lincoln County

Cleveland County