

**ELECTRICITIES
CHERRYVILLE SITE**

CHERRYVILLE SENIOR HIGH SCHOOL
7 MIN. - 2.8 MILES

BLACK PARK
7 MIN. - 3 MILES

FEDEX ONSITE
7 MIN. - 2.7 MILES

FIRE STATION
6 MIN. - 2.3 MILES

POLICE DEPARTMENT
6 MIN. - 2.6 MILES

WILLIAM B BEAM INTERMEDIATE
6 MIN. - 2.3 MILES

STROUP MEMORIAL PARK
5 MIN. - 2 MILES

CHERRYVILLE ELEMENTARY SCHOOL
7 MIN. - 2.4 MILES

JOHN CHAVIS MIDDLE SCHOOL
7 MIN. - 2.5 MILES





LEGEND:

- Site Boundary
- Parcels
- Railroad

Site Area: 42.38 AC



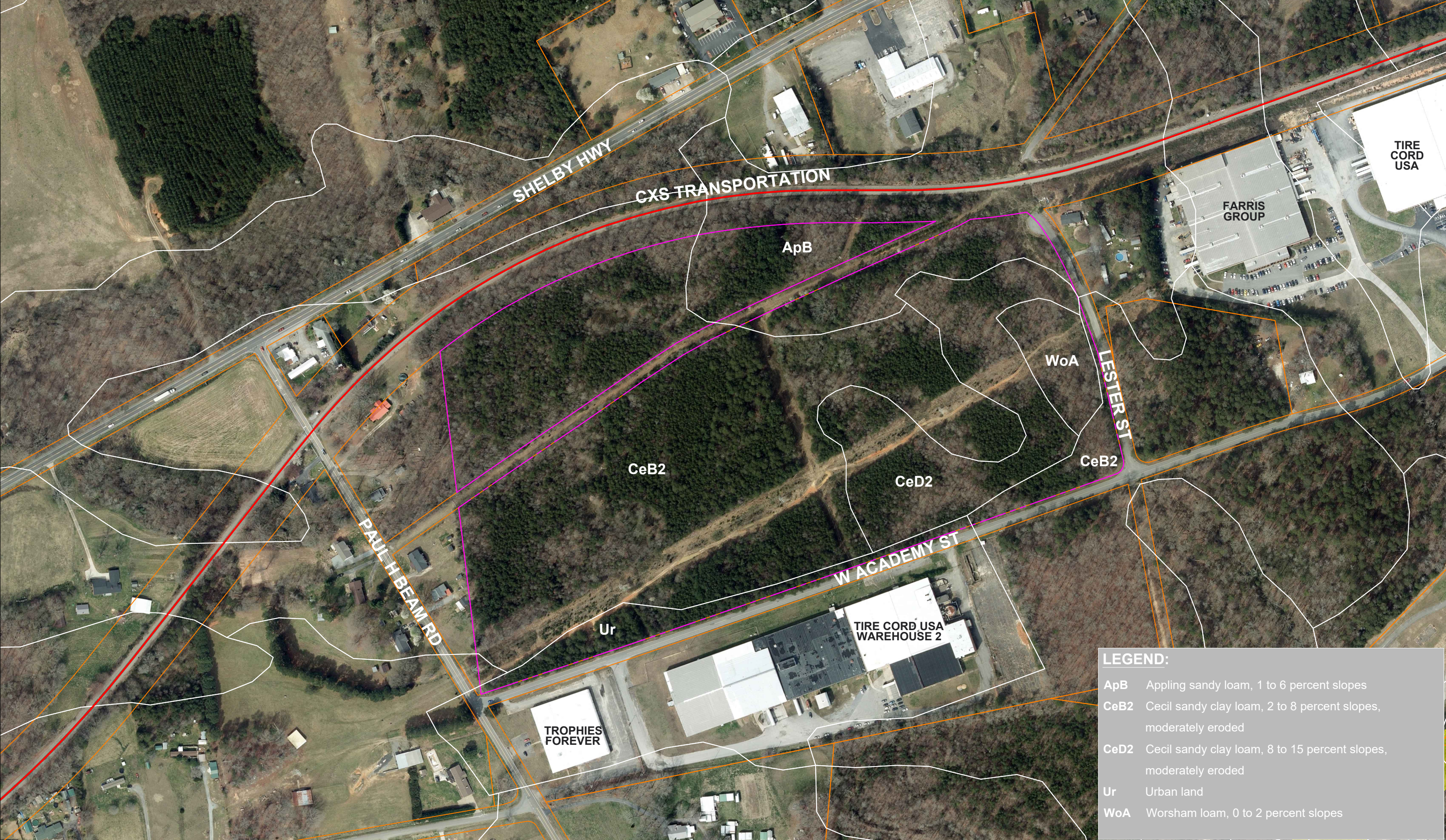


LEGEND:

- Site Boundary
- Parcels
- Railroad

Site Area: 42.38 AC

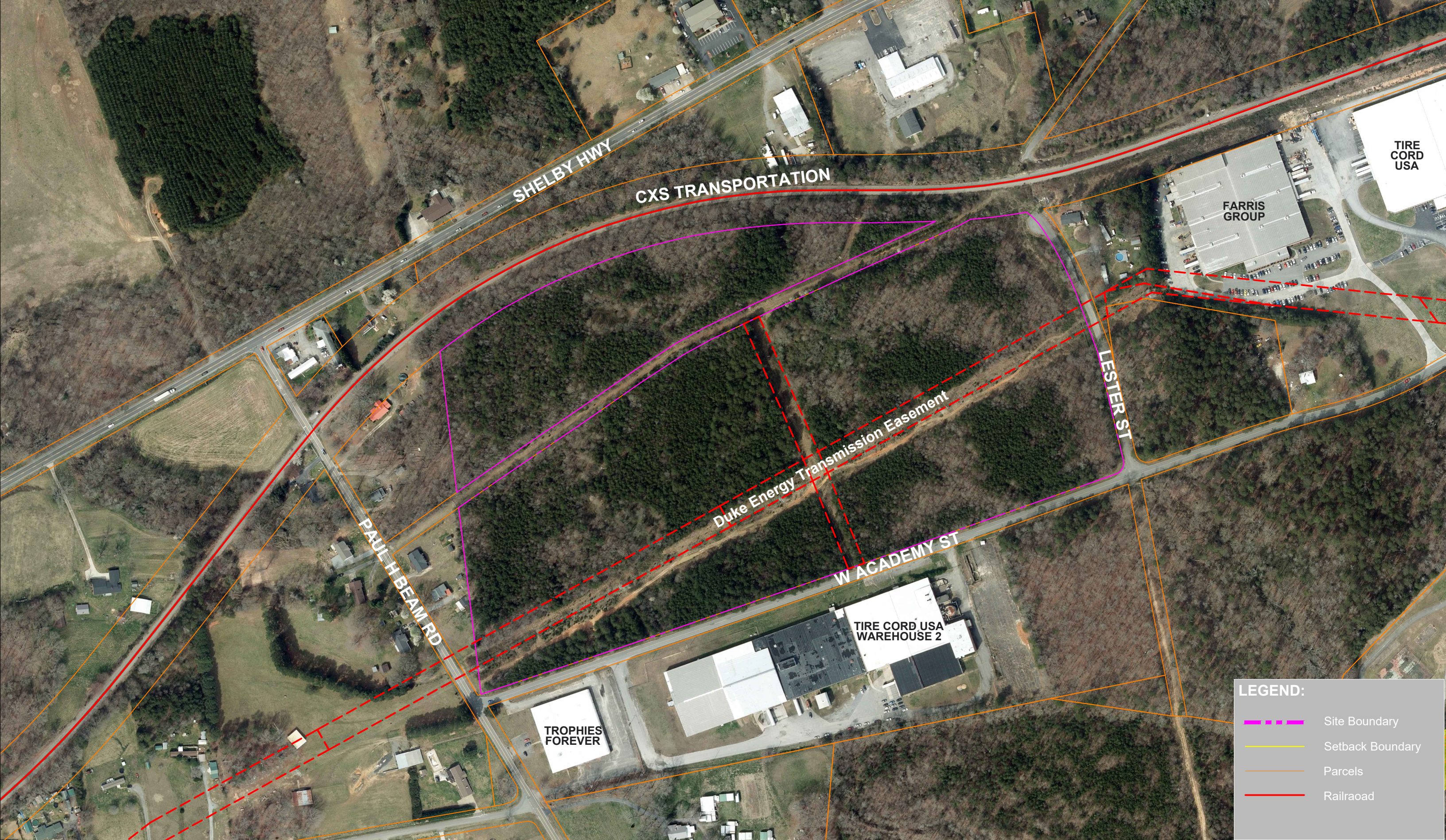




LEGEND:

ApB	Appling sandy loam, 1 to 6 percent slopes
CeB2	Cecil sandy clay loam, 2 to 8 percent slopes, moderately eroded
CeD2	Cecil sandy clay loam, 8 to 15 percent slopes, moderately eroded
Ur	Urban land
WoA	Worsham loam, 0 to 2 percent slopes





LEGEND:

- - - - - Site Boundary
- - - - - Setback Boundary
- - - - - Parcels
- Railroad





LEGEND:

- - - - - Site Boundary
- - - - - Parcels
- +++++ Railroad
- █ Buildable Area

Site Area: 42.38 AC





LEGEND:

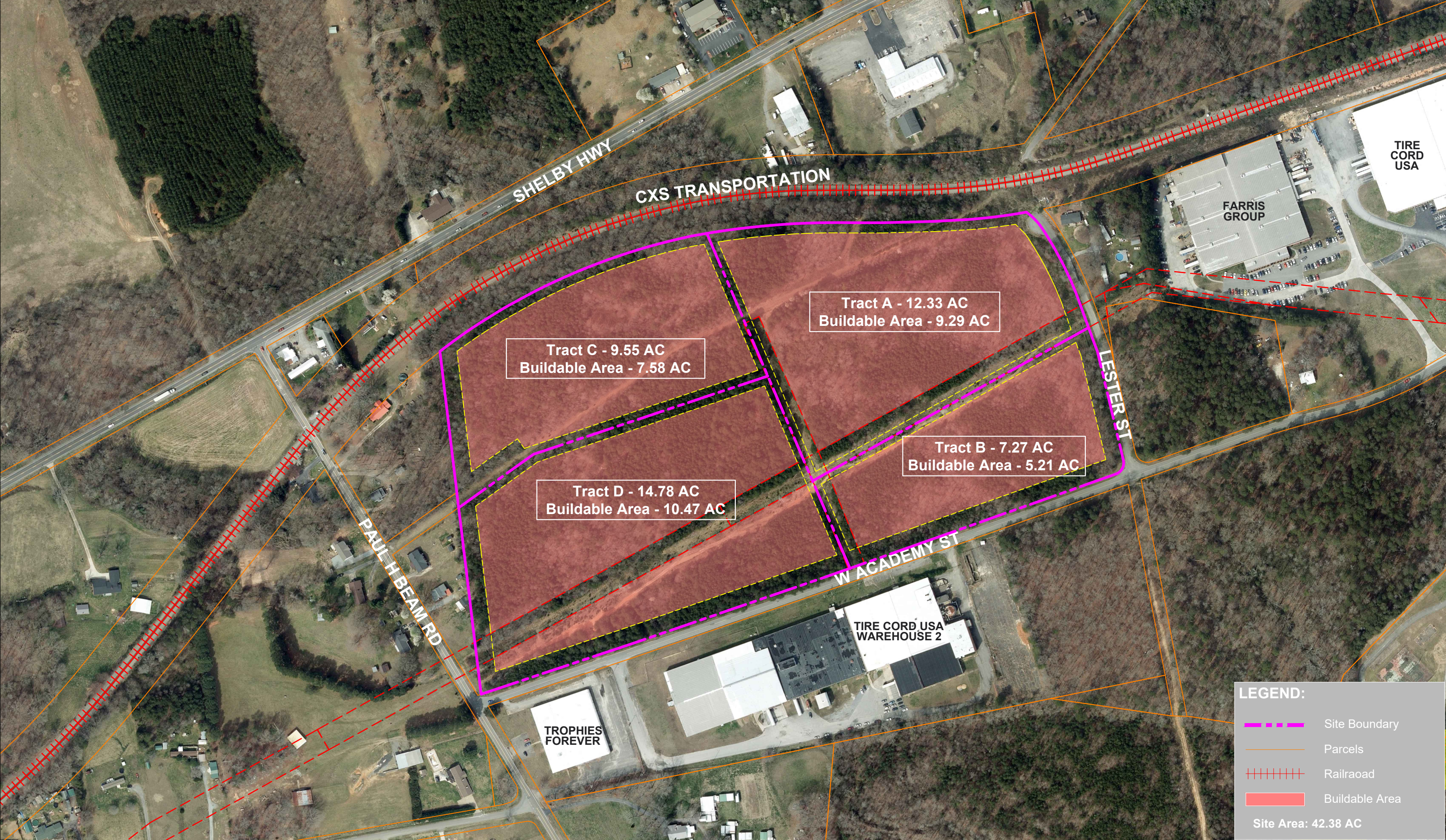
- - - - - Site Boundary
- - - - - Parcels
- +++++ Railroad

Site Area: 42.38 AC











LEGEND:

- - - - - Site Boundary
- - - - - Parcels
- +++++ Railroad

Site Area: 42.38 AC





